

## Environmental Health

FOOD SAFETY & RECREATIONAL LICENSING program includes the licensing, inspections, & investigations of food service restaurants & grocery stores, lodging, campgrounds, public swimming pools, tattoo and body piercing establishments, and vending machines on an annual basis.



ENVIRONMENTAL INVESTIGATIONS provided on; animal bites, drinking water issues, Radon, Lead, West Nile Virus, foodborne illnesses, and human health hazards. The Environmental Health Specialists provide guidance, education, and referrals.

## Douglas County Department of Health & Human Services: Public & Environmental Health



Monday-Friday  
8:00 a.m.- 4:30 p.m.

1316 N. 14th St., Suite 324  
Superior, WI 54880  
(715) 395-1304

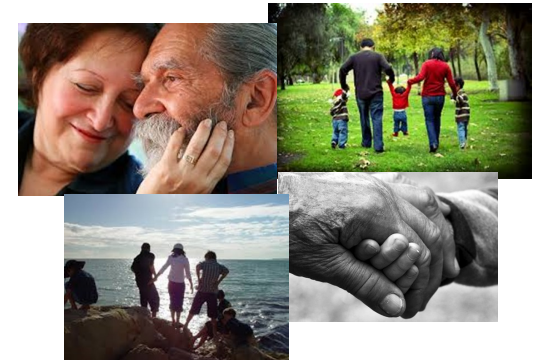


Website:  
[www.douglascountywi.org](http://www.douglascountywi.org)

## Douglas County Department of Health & Human Services: Public & Environmental Health



## Programs & Services



Mission:  
*To promote the health, safety, and well-being of individuals and families.*

## General Population

**IMMUNIZATIONS** are provided free of charge to children and adults that meet eligibility. Some immunizations & Tuberculosis (Mantoux) skin testing are available for adults on a fee-for-service basis.

- The HPV vaccine protects men and women against many types of cancers & is one of the Immunizations that can be received.



Certain **COMMUNICABLE & SEXUALLY TRANSMITTED DISEASES** are mandated to be reported to Public Health for investigation, control, and prevention of spread of the disease. A Registered Nurse will provide education in a respectful and confidential manner.

**PUBLIC HEALTH PREPAREDNESS** includes activities that strengthen county, regional, & state organizations' ability to plan for and respond to public health emergencies.



## Women and Children

**HEALTHY BEGINNINGS +** prenatal care coordination services are available to eligible pregnant women. The Registered Nurse provides education on pregnancy, baby growth & infant development. This free service may continue for 60 days after the birth.



**NEW BABY VISIT** services are available regardless of income to all families in the county free of charge. The Registered Nurse is specially trained to answer questions you may have regarding your health and your baby's health & safety.



**AGES & STAGES DEVELOPMENTAL** screening is available for all children 0-5 years old, free of charge. The families and children will be provided with education & techniques to enhance child development.

**REPRODUCTIVE HEALTH** services offers free pregnancy testing and referral to community resources for pregnancy support and well being,