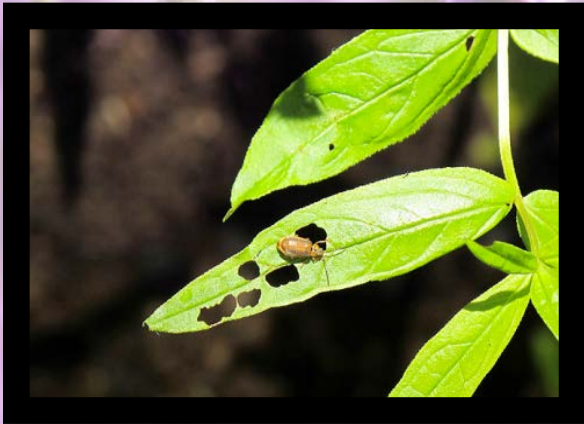


# Purple Loosestrife Biocontrol Training

Purple Loosestrife is an invasive wetland plant that can produce millions of seeds every year. It can take over wetlands and force out native plants and animals. If you have Purple Loosestrife on your property, biocontrol may be the most viable long-term control method, promising to greatly reduce the need for other more costly and disruptive control methods such as yearly herbicide application. Biocontrol uses purple loosestrife's natural predator, the Galerucella beetle, to control it. Careful research has shown that these insects are dependent on Purple Loosestrife, are not a threat to other plants, and they effectively decrease purple loosestrife's size and seed output-allowing native species to flourish.

If you are fighting this purple invader, consider participating in a **FREE** Biocontrol Training. During the training you will learn how to identify Purple Loosestrife, rear and release beetles, and have access to free equipment. If you are interested in a **FREE** training please contact **Christine Ostern at (715) 395-1266**. Though Purple Loosestrife is almost certainly here to stay in Wisconsin, we should be able to efficiently protect our wetland ecosystems from domination by Purple Loosestrife by simply restoring some of the natural checks and balances that can result in diverse, healthy environments.



Beetles Eating Purple Loosestrife



Purple Loosestrife in Bloom



Net Enclosures for Beetle Rearing



BEFORE BIOCONTROL



AFTER BIOCONTROL

**BEFORE** biocontrol insects released: Purple loosestrife infested Pig's Eye Lake, St Paul, 2000.

**AFTER** biocontrol insects released: Native growth and defoliated purple loosestrife in Pig's Eye Lake, St Paul, 2004.

