

# TIMBER SALE MAP



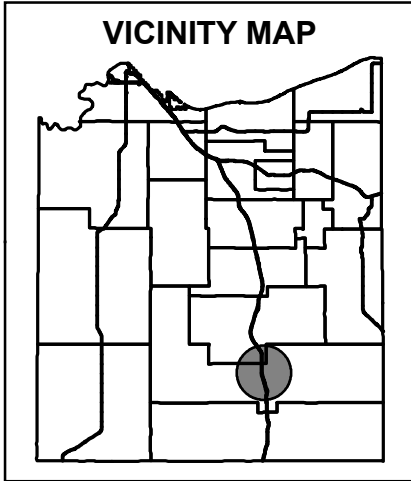
Douglas County Forestry Department  
 9182 East Hughes Avenue  
 P.O. Box 211  
 Solon Springs, WI 54873  
 Phone (715) 378-2219, Fax (715) 378-2807

TRACT NUMBER: 23-23

SALE NUMBER:

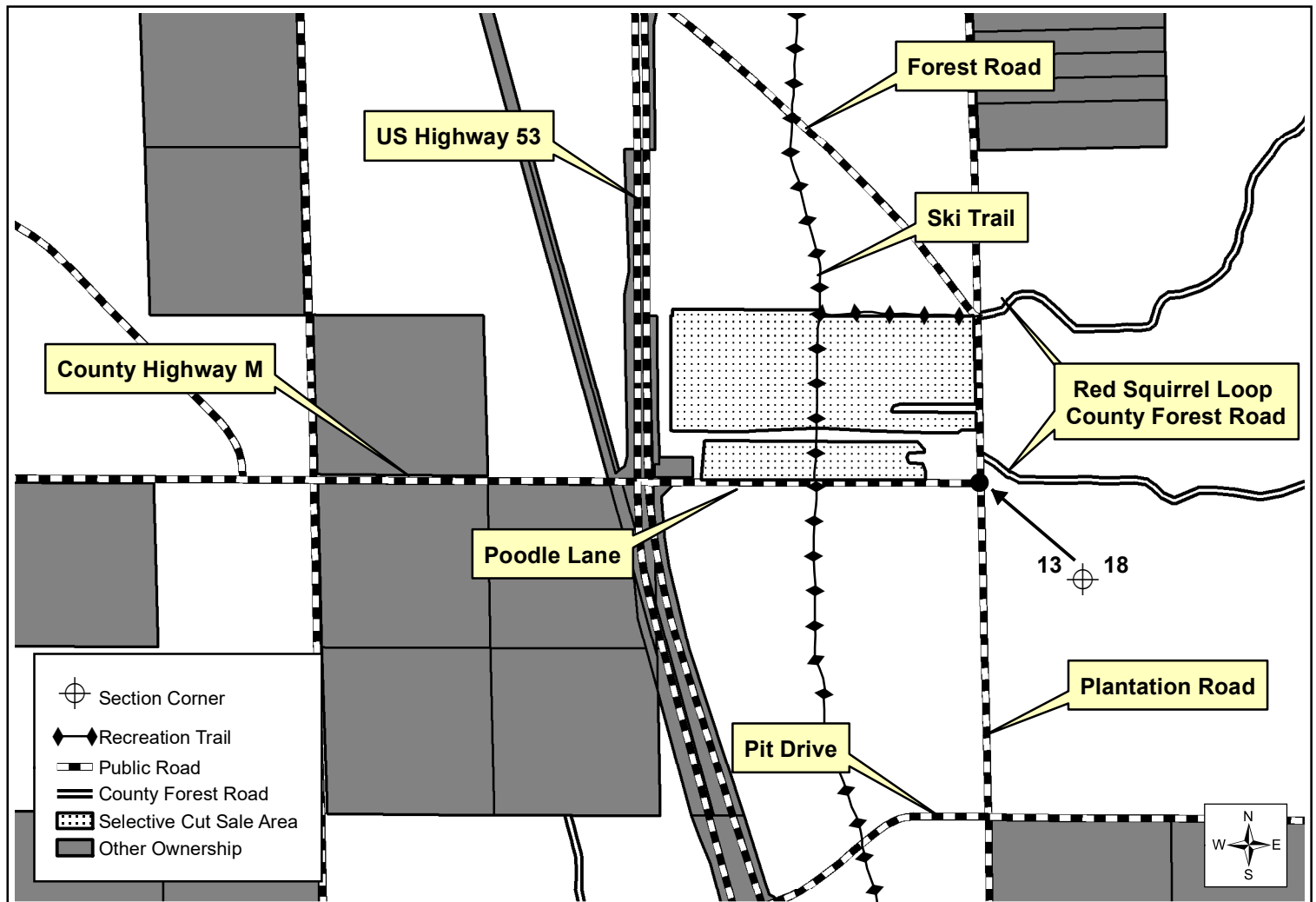
Prepared By: Justin Holmes Legal: Section 13, T44N - R12W  
 Sale Name: Gravitron Town: Gordon Topography: Flat  
 Scale Method: Ticket Scale Acres: 62 Harvest Units: 1 Soils: Sand  
 Contract Period: 1 Year Map Scale: 4" = 1 mile Season: All Season

-- See the Douglas County Timber Sale Contract and reverse side for terms and conditions. --



SPECIES, PRICE & ESTIMATED VOLUME INFORMATION				
SPECIES	4" ROUNDWOOD (CORDS)	WHOLE-TREE (CORDS)	SAWLOGS (MBF)	MINIMUM TOTAL SPECIES PRICE
Red Pine	735	XXX	XXX	\$27,709.50
<b>TOTALS</b>	<b>735</b>	<b>XXX</b>	<b>XXX</b>	<b>\$27,709.50</b>

The Red Pine volume contains a high percentage of sawlog size material, with an average dbh of 13-inches.



- Section Corner
- Recreation Trail
- Public Road
- County Forest Road
- Selective Cut Sale Area
- Other Ownership

