

TIMBER SALE MAP



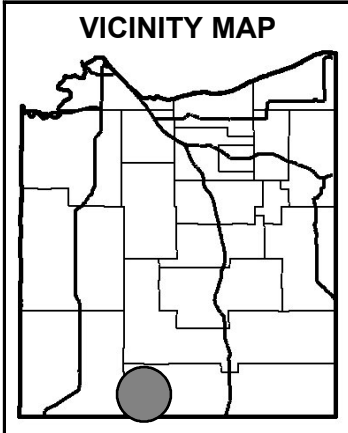
Douglas County Forestry Department
 9182 East Hughes Avenue
 P.O. Box 211
 Solon Springs, WI 54873
 Phone (715) 378-2219, Fax (715) 378-2807

TRACT NUMBER: **27-21**

SALE NUMBER:

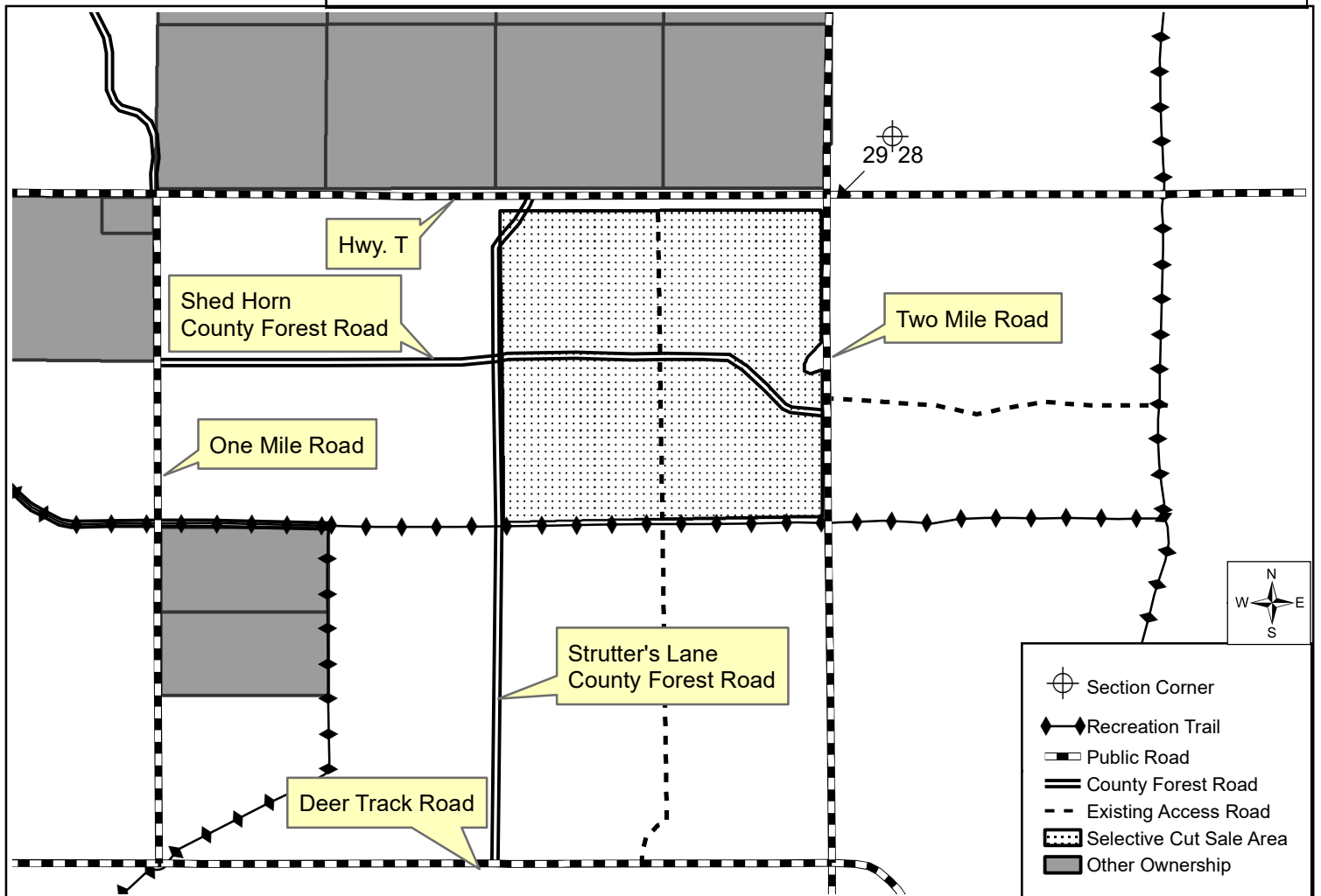
Prepared By: Mark Hager Legal: Sec 29 T43N - R13W
 Sale Name: Final Hours Town: Wascott Topography: Sloping Hills
 Scale Method: Ticket Scale Acres: 139 Harvest Units: 1 Soils: Sand
 Contract Period: 2 Years Map Scale: 4" = 1 mile Season: All-Season

-- See the Douglas County Timber Sale Contract and reverse side for terms and conditions. --



SPECIES, PRICE & ESTIMATED VOLUME INFORMATION				
SPECIES	4" ROUNDWOOD (CORDS)	WHOLE-TREE (CORDS)	SAWLOGS (MBF)	MINIMUM TOTAL SPECIES PRICE
Red Pine	950	XXX	XXX	\$25,555.00
TOTALS	950	XXX	XXX	\$25,555.00

The Red Pine volume contains approximately 97% Red Pine and 3% Jack Pine. The Red Pine volume contains a large percentage of bolt size material with an average stem DBH of 8 inches.



Section Corner
 Recreation Trail
 Public Road
 County Forest Road
 Existing Access Road
 Selective Cut Sale Area
 Other Ownership