

TIMBER SALE MAP



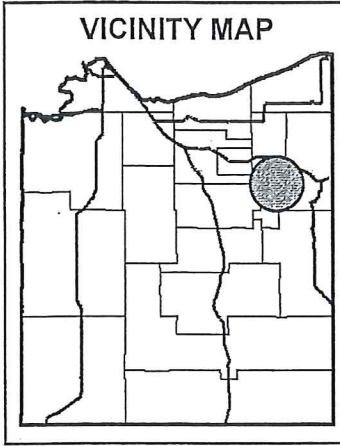
Douglas County Forestry Department
 9182 East Hughes Avenue
 P.O. Box 211
 Solon Springs, WI 54873
 Phone (715) 378-2219, Fax (715) 378-2807

COPY

TRACT NUMBER: 06-20
 SALE NUMBER: 4508

Prepared By: Logan Jones Legal: Sec 16,17,20,21 T47N - R10W
 Sale Name: Maximus Town: Brule Topography: Flat
 Scale Method: Ticket Scale Acres: 208 Harvest Units: 3 Soils: Loamy Sand
 Contract Period: 3 Years Map Scale: 3" = 1 mile Season: All-Season

-- See the Douglas County Timber Sale Contract and reverse side for terms and conditions. --

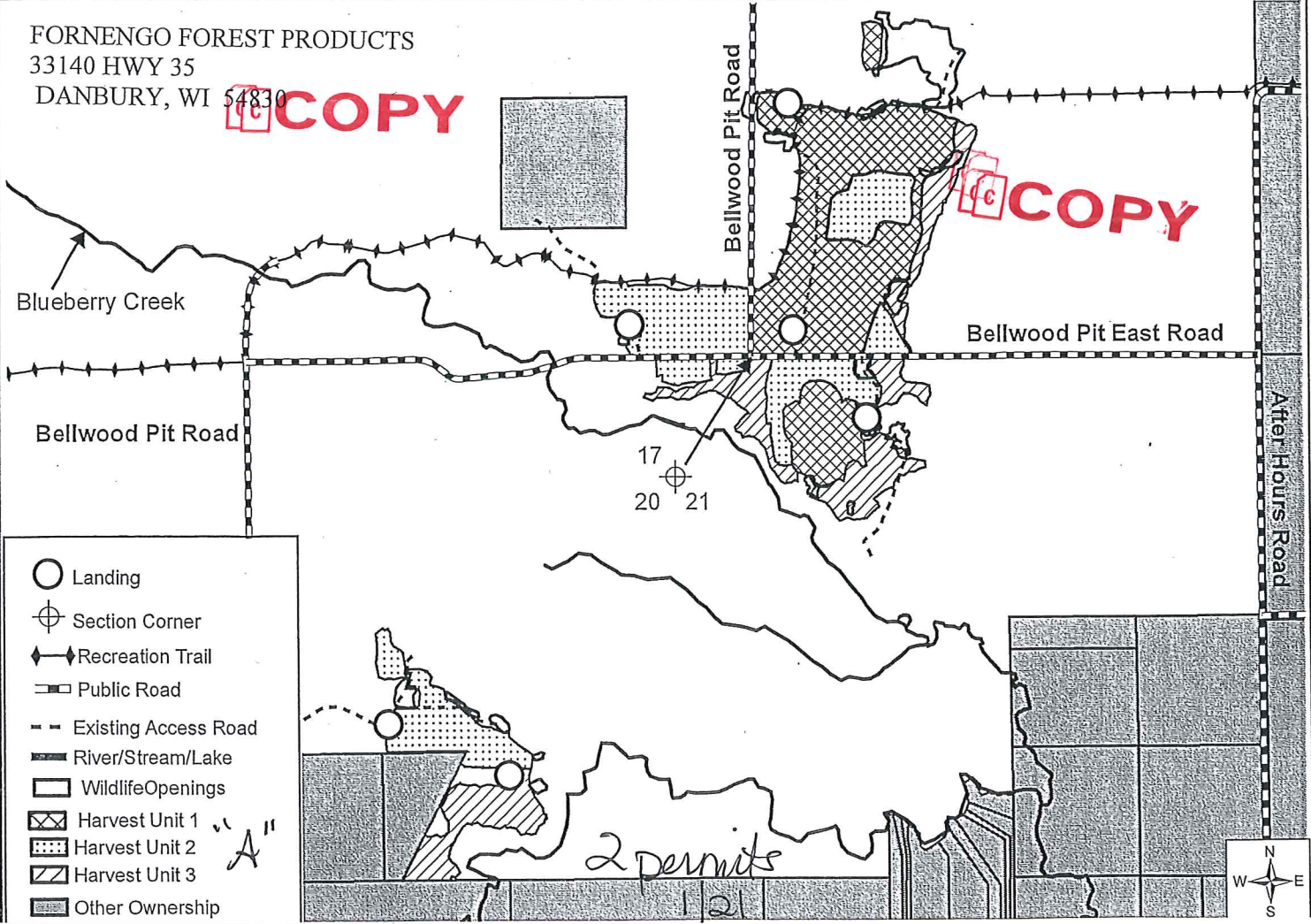


SPECIES, PRICE & ESTIMATED VOLUME INFORMATION				
SPECIES	4" ROUNDWOOD (CORDS)	WHOLE-TREE (CORDS)	SAWLOGS (MBF)	MINIMUM TOTAL SPECIES PRICE
Red Pine	5,295	6,465	XXX	\$188,778.00
Aspen	950	1,200	XXX	\$17,160.00
				449,235.00
TOTALS	6,245	7,665	XXX	\$205,938.00

The Red Pine volume contains approximately 96% Red Pine, 2% Balsam Fir, 1% Jack Pine & 1% Misc. The Red Pine volume contains an estimated 80% sawlog sized material with a 13" average diameter. The Aspen volume contains approximately 96% Aspen, and 4% & Misc.

FORNENGO FOREST PRODUCTS
 33140 HWY 35
 DANBURY, WI 54830

COPY



- Landing
- ⊕ Section Corner
- ◆◆ Recreation Trail
- ▬ Public Road
- - Existing Access Road
- ▬ River/Stream/Lake
- Wildlife Openings
- ▨ Harvest Unit 1
- ▩ Harvest Unit 2
- ▧ Harvest Unit 3
- ▭ Other Ownership

2 permits
 12

