

TIMBER SALE MAP

"D"
No cutting Apr 15
through July 15



Douglas County Forestry Department
9182 East Hughes Avenue
P.O. Box 211
Solon Springs, WI 54873
Phone (715) 378-2219, Fax (715) 378-2807

TRACT NUMBER 45-20

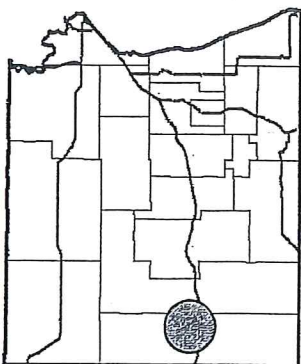
SALE NUMBER 4548

QC COPY

Prepared By: Mark Hager Legal: Sec 11 & 12 T43N - R12W
 Sale Name: Seizure Town: Wascott Topography: Sloping Hills
 Scale Method: Ticket Scale Acres: 43 Harvest Units: 2 Soils: Sand
 Contract Period: 2 Years Map Scale: 3.75" = 1 mile Season: All-Season

-- See the Douglas County Timber Sale Contract and reverse side for terms and conditions. --

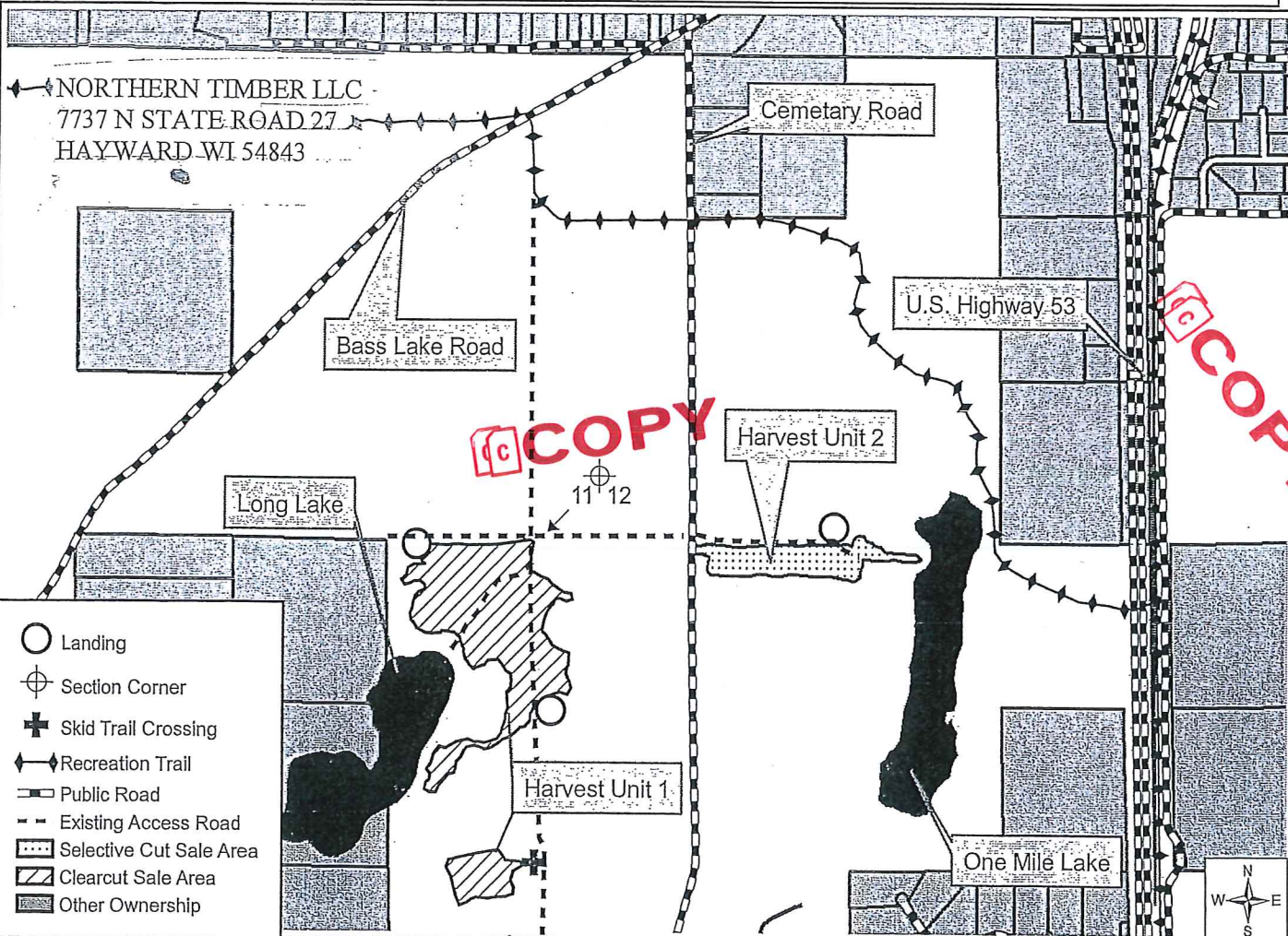
VICINITY MAP



SPECIES, PRICE & ESTIMATED VOLUME INFORMATION

SPECIES	4" ROUNDWOOD (CORDS)	WHOLE-TREE (CORDS)	SAWLOGS (MBF)	MINIMUM TOTAL SPECIES PRICE
Red Pine	1,560	1,740	XXX	\$8,178.00
TOTALS	1,560	1,740	XXX	\$118,372.80 \$8,178.00

The Red Pine volume contains approximately 99% Red Pine & 1% Misc. The Red Pine volume contains a high percentage of sawlog material with a 14 inch average stem D.B.H.



QC COPY

QC COPY

6/21 "A" 1 Dermot