

# TIMBER SALE MAP



Douglas County Forestry Department  
 9182 East Hughes Avenue  
 P.O. Box 211  
 Solon Springs, WI 54873  
 Phone (715) 378-2219, Fax (715) 378-2807

**CC COPY**

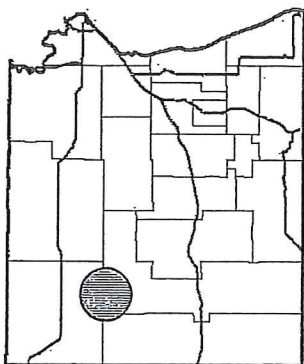
TRACT NUMBER 51-16

SALE NUMBER 4352

Prepared By: Terry Asleson (DNR) Legal: Sec 24 T44N - R14W & Sec 19 T44N - R13W  
 Sale Name: The Outfield Town: Gordon & Dairyland Topography: Sloping Hills  
 Scale Method: Ticket Scale Acres: 44 Harvest Units: 1 Soils: Sandy Loam  
 Contract Period: 2 Years Map Scale: 4" = 1 mile Season: Seasonal (see reverse)

-- See the Douglas County Timber Sale Contract and reverse side for terms and conditions. --

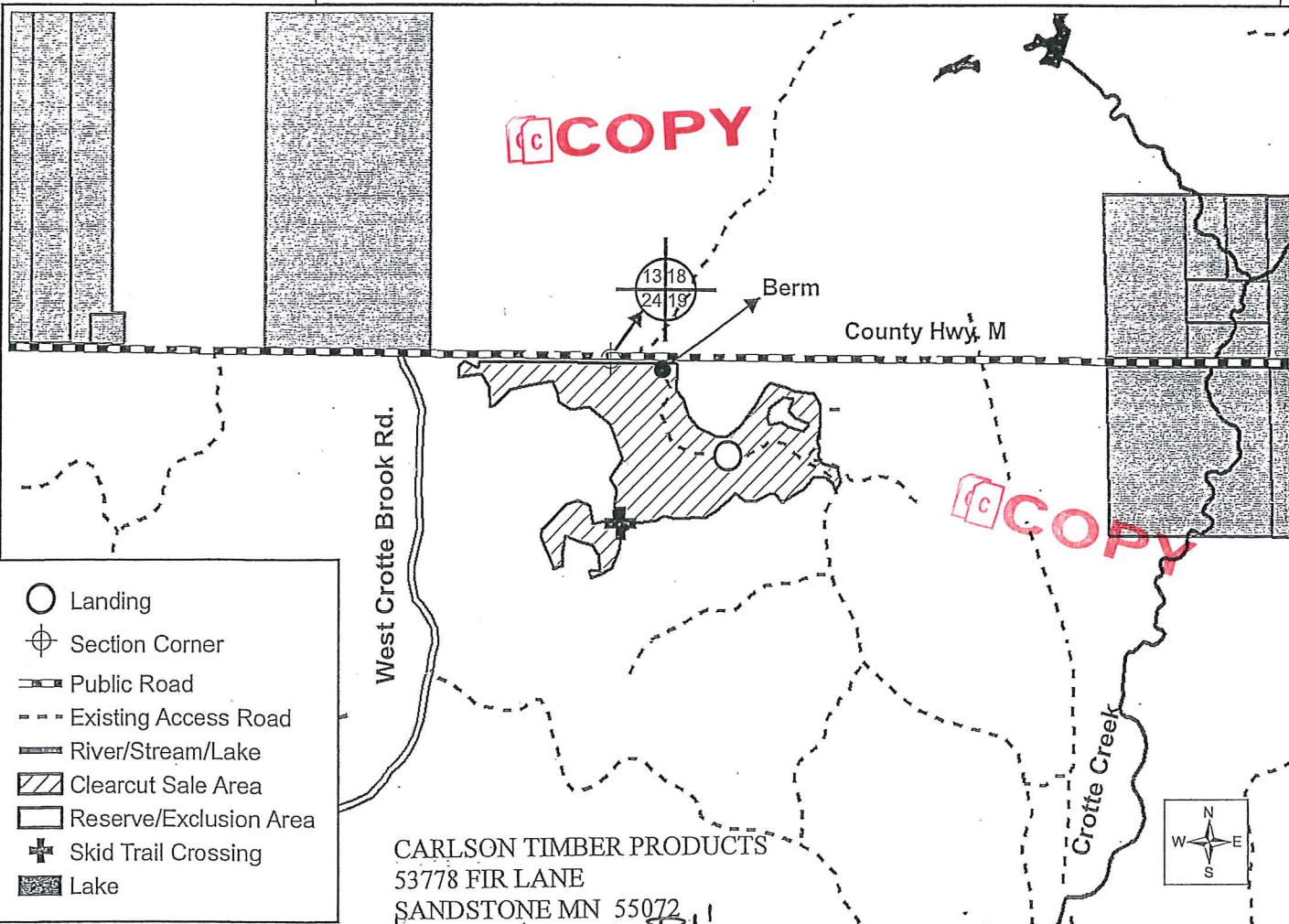
## VICINITY MAP



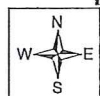
## SPECIES, PRICE & ESTIMATED VOLUME INFORMATION

SPECIES	4" ROUNDWOOD (CORDS)	WHOLE-TREE (CORDS)	SAWLOGS (MBF)	MINIMUM TOTAL SPECIES PRICE
Aspen	1,195	1,705	XXX	\$24,722.50
				<i># 77662.75</i>
<b>TOTALS</b>	<b>1,195</b>	<b>1,705</b>	<b>XXX</b>	<b>\$24,722.50</b>

The Aspen volume contains approximately 51% Aspen, 17% Red Maple, 12% Sugar Maple, 7% White Birch, 3% Basswood, 2% Black Spruce, 2% Balsam Fir, 2% Tamarack, 2% Ash, 1% White Spruce, and 1% Misc.



CARLSON TIMBER PRODUCTS  
 53778 FIR LANE  
 SANDSTONE MN 55072



*421 "B" 1 permit*