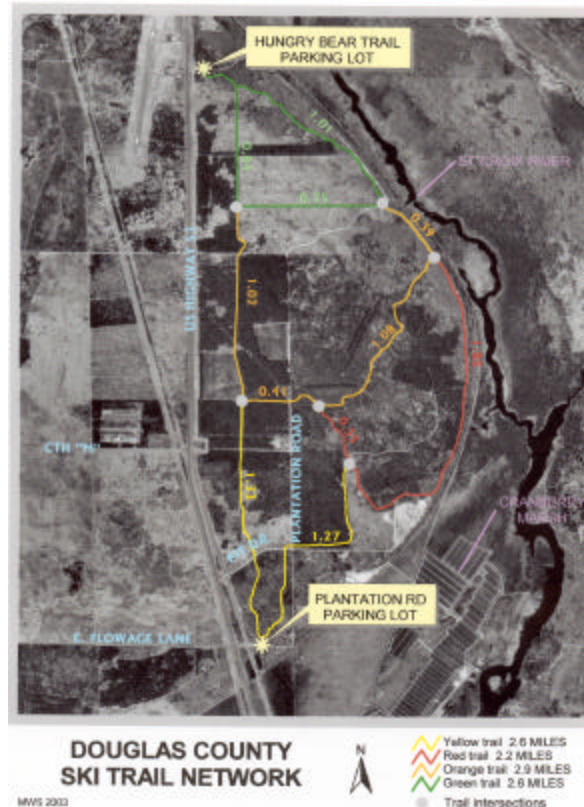


## OTHER CROSS-COUNTRY SKI TRAILS IN THE AREA

(NOT MANAGED BY THE DOUGLAS COUNTY FORESTRY DEPARTMENT)

**Superior Forest Ski Trails:** Located near the city of Superior, have over 25 kilometers of groomed trails, part of which are designated for skate skiing. Please contact the City of Superior, Parks and Recreation Department at (715) 395-7270.

**Brule River State Ski Trails:** Located 1/4 th mile west of the Brule River on US Hwy 2, provides over six miles of groomed ski trails both both track and skate skiing. Please contact the WDNR at (715) 372-5678.



### Cross Country Ski Trails

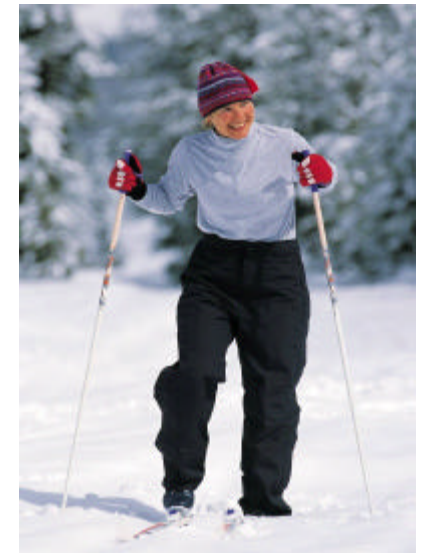
Douglas County Forestry  
Department  
9182 East Hughes Avenue  
P.O. Box 211  
Solon Springs, WI 54873

Phone: (715) 378-2219  
Fax: (715) 378-2807  
E-mail: [forestry@douglascountywi.org](mailto:forestry@douglascountywi.org)



## The Douglas County Forestry Department

### Cross Country Ski Trails



9182 E. Hughes Avenue  
P.O. Box 211  
Solon Springs, WI 54873

TEL: (715) 378-2219  
FAX: (715) 378-2807

E-MAIL: [forestry@douglascountywi.org](mailto:forestry@douglascountywi.org)

## Cross-Country Ski Trails

Douglas County is the largest county forest in Wisconsin, with over 269,000 acres.

These lands are managed for multiple-use to provide a variety of recreational opportunities as well as timber harvesting activities.



Over 10 miles of groomed ski trails will provide you with excellent viewing and photographic opportunities along the scenic St. Croix River and pine

forests. There are three rest area shelters available along the trail for you to stop, relax, and maybe even picnic.

There is a color-coded map on the back of this brochure that shows the four available trails. Trails may be skied in either direction and you may start your ski trip at either the northern Hungry Bear Trail parking lot or the southern Plantation Road parking lot both located to the east of US Hwy 53.

The demand continually increases for quiet areas and also developed areas on the County Forest. The Douglas County Forestry Department strives to achieve a balance in this development of the forest for recreational users as well as meeting our needs for wood products. Our primary responsibility is to provide stewardship to forest resources while developing and maintaining recreational opportunities. Please respect the forest and the rights of others.

- Please do not litter. If you haul it in, haul it out. Go one step further and haul out what less thoughtful persons have left behind.
- Please be alert for oncoming skiers.
- Get out of the track when herringboning (ski skating) up hills.
- Do not snowplow in the tracks going down hills.
- Do not harass the wildlife.
- Keep pets off the trails.

No motorized vehicles are allowed on the ski trails except for maintenance or other administrative use. Please be aware that you may see snowmobiles and ATV's as the Wild Rivers Trails and Trail 7 are in the vicinity of and do cross the ski trails. However, they do not share the same track as the ski trails.

For further information, please contact:

Douglas County Forestry Department  
P.O. Box 211  
Solon Springs, WI 54873  
(715) 378-2219  
[forestry@douglascountywi.org](mailto:forestry@douglascountywi.org)

In case of an **emergency**, please dial **911**

